



ADEX

**ENLIGHTENING YOU
WITH THE RIGHT LIGHT**



Complete Lighting Solution from Planning to Implementation

We believe that light inspires, enhances, accentuates and brings drama to great architecture and interiors. Understanding how people see and respond to light is key to the design of a well-lit space. Lighting can adjust people's daily rhythms and improve their motivation, well-being and productivity.

Adex Lighting offers lighting with latest technologies which can enhance spaces with minimal energy consumption as well as minimizing the impact on the environment. We can help you reach your energy efficiency and sustainability goals to protect the planet with our LED lighting solution.

The varied nature of our project portfolio means we employ a mix of creative individuals from architecture, design and engineering backgrounds with practical and academic experiences. The result is the perfect synergy of creativity, productivity and experience.

Adex Lighting System Ltd. is a part of Adex Group, whose reputation for quality engineering solutions is well established since 1982. In continuation of this long history of success, the track record of Adex Lighting projects goes back over 15 years, applying advanced lighting and control technologies to complex projects for both government and private sectors.

MANAGING DIRECTOR

Tarana Ali

Tarana Ali is the Managing Director and Founder of Adex Lighting System Ltd., a leading provider of efficient and sustainable lighting solutions in Bangladesh. She is committed to reduce carbon footprint and to create innovative lighting solutions that are both energy efficient and aesthetically pleasing.

Tarana holds a Bachelor's degree in Electrical and Electronics and a Master's degree in Signals, Systems & Control. In early career, she worked at renowned organizations like Jaguar, Mitsubishi and Hoare Lea a consultancy firm in London. While working for these organizations, she was involved in many prestigious projects like Bangkok Metro, Bank of America HQ in Europe, Accenture HQ in UK, Grosvenor House in London, etc. She gained a lot of experience in electrical systems, lighting & control systems during this period.

Tarana founded Adex Lighting System Ltd. in Bangladesh in 2010 and with her experience she has led her team to great heights. ALSL has handled many large projects in Bangladesh under her guidance. Her knowledge of wide range of lighting products and tailored solutions enables team ALSL to provide turnkey solutions for all types of projects. Her extensive work at ALSL means the gamut from public places to residences.

She has a passion for good lighting and how it is so important for human wellbeing and to protect biodiversity. Her technical understanding is an essential part of ALSL and the client's required project scope of work.



SOLUTIONS

Interior Lighting

Exterior Lighting

Dynamic Lighting

Emergency Lighting

Digital Renderings

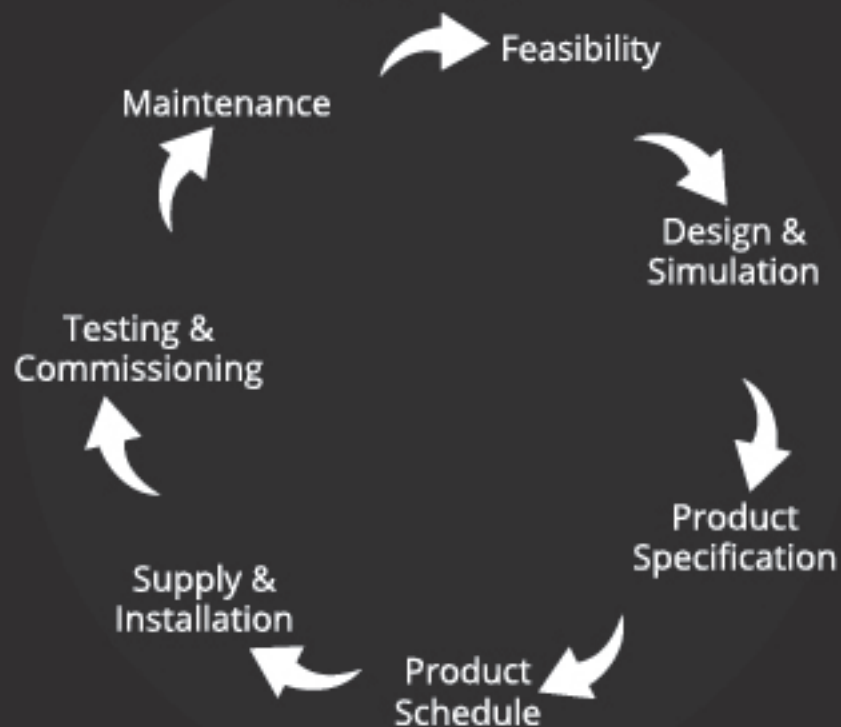
Computer Simulation

Customized Luminaires

Daylight Harvesting

Lighting Control System

SERVICES



VERTICALS

Education

Hospitality

Healthcare

Industry

Commercial

Residence

Landscape

Façade

Road Lighting

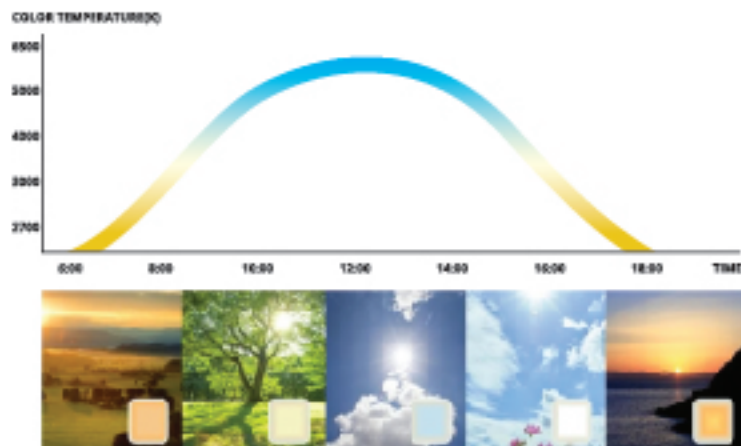
Public Spaces



HUMAN CENTRIC AND PLANET CONSCIOUS LIGHTING

We have always been responsible towards people and environment. With light, where it is needed, when it is needed and as much as needed, it improves people's well-being and stimulates their power and activity.

During night the artificial light must be used to care for and conserve the environment by preserving the night darkness while respecting human needs.



THE UNIFIED GLARE RATING (UGR)

It is important to achieve the correct level of lighting for your environment to ensure that employees, visitors or users have clean visibility.

Glare refers to the visual conditions that cause visual discomfort and reduce visibility. UGR (The Unified Glare Rating) is the measure of glare from all visible luminaires. A lower UGR rating means low glare.

UGR Value	Application
16	Boardroom & Meeting Rooms
19	Offices & Commercial
22	Industrial Work (Fine)
25	Industrial Work (High)
28	Circulation areas and corridors
More than 28	Deemed as harsh lighting (not acceptable)



COLOR TEMPERATURE



Play with different color temperature

BEAM ANGLE

Play with different lighting applications, beams, effects, lamp types and output levels using glare free fixtures

10°

29°

6°

43°

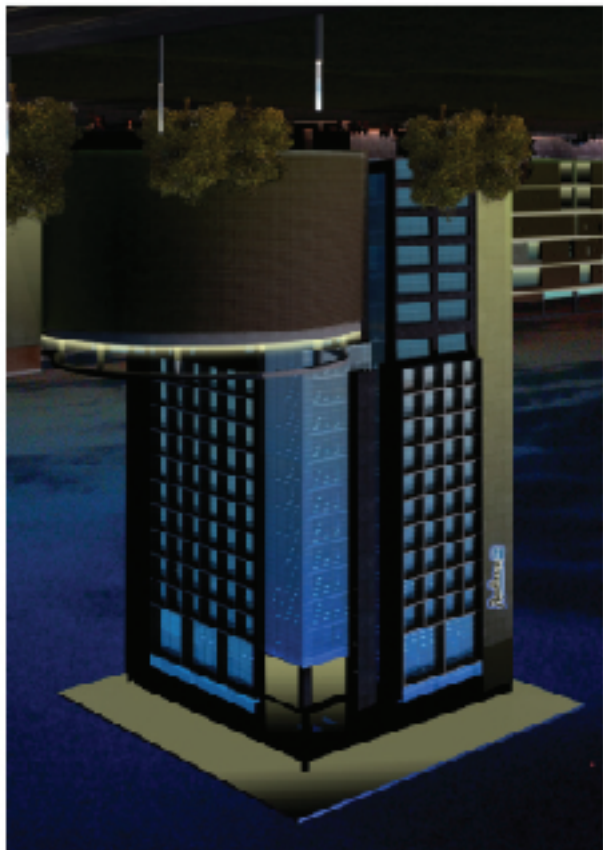
43°

29°

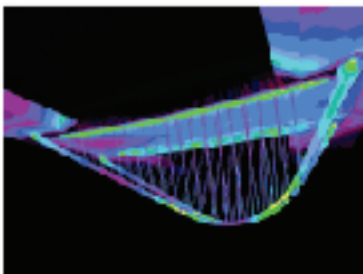
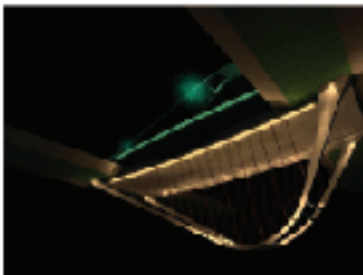
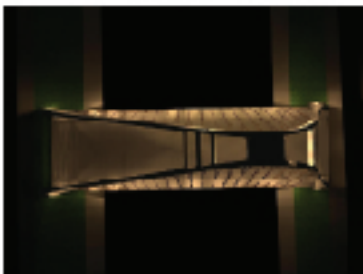
6°

10°

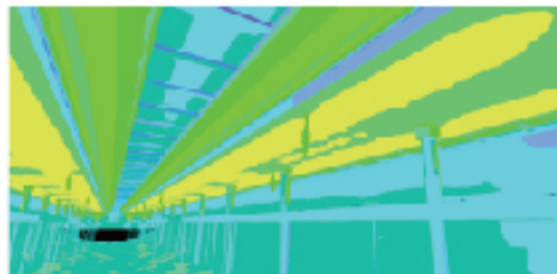
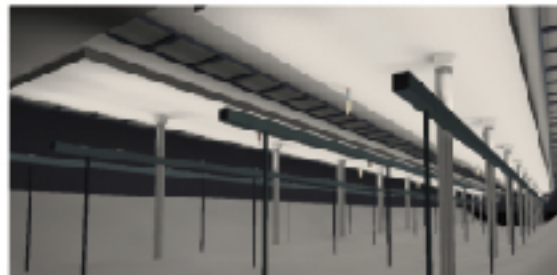
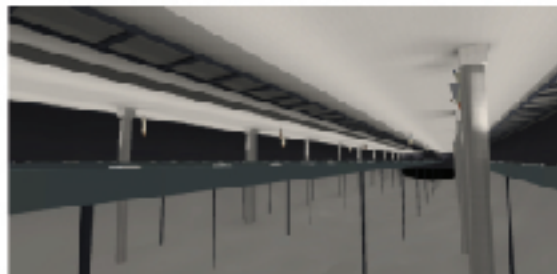
Radisson Blu



Kalliakoir Bridge



Metro Rail CP-6



LIGHTING CONTROL SYSTEM

ALSL offers highly reliable Lighting Control Systems that deliver bespoke, state-of-the-art lighting controls. Our advanced control systems automate the lighting to deliver a comfortable user experience while reducing energy usage, by utilizing functionalities such as dimming, daylight harvesting and occupancy detection. We can use these features and set different lighting scenes in such a way that it works in harmony with our body's natural circadian rhythms.

KEY TECHNOLOGIES IN OUR LIGHTING CONTROL SYSTEM INCLUDE:

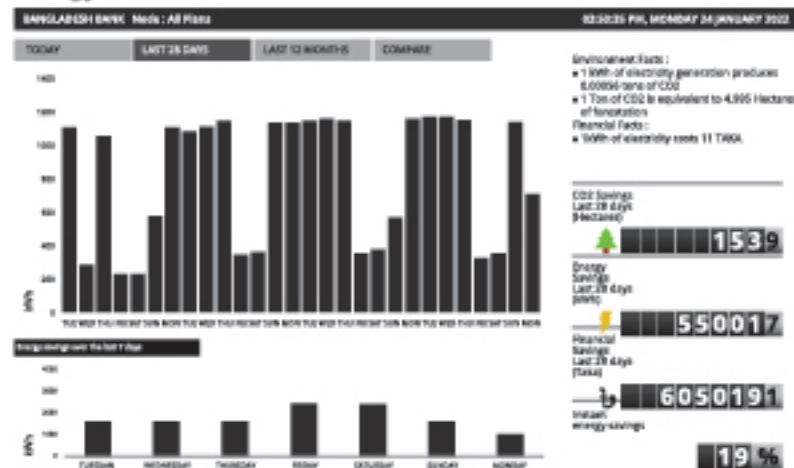
- Presence sensing and precision daylight control for reduced energy use
- Color changing and scene setting using user friendly interfaces, mobile devices
- Correct lighting level setting according to time or tasks
- Advanced graphical front-end software: fully reprogrammable controls, powerful monitoring and reporting tools
- Control of DALI, DMX, DSI and 1-10 volt lighting
- Automated testing of emergency lighting (ATS)
- Full interfacing to other building control systems, e.g. BMS, using Open Protocols

We have a great team of professional & supporting engineering staffs who are experienced in Lighting Control System Design, Installation and Programming. We maintain our staff expertise with constant training both locally and through overseas training. Our team can design from a single meeting room to a whole complex building to suit your requirements with cost effective lighting and control solutions.

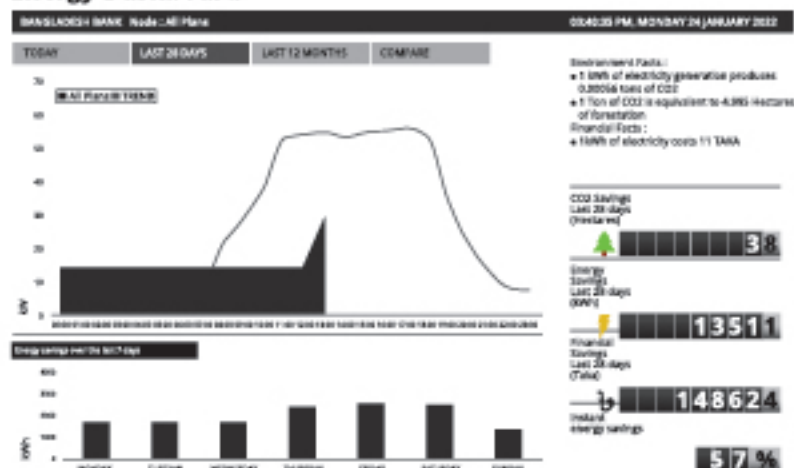


ENERGY SAVINGS

Energy Dashboard



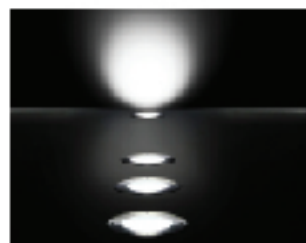
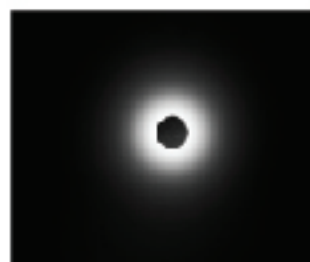
Energy Dashboard



Depending on the characteristics of the space to be controlled, energy savings as high as 90% can be realized through use of occupancy sensors. Sensor, Time Clock, Annual Programming from central server, Apps, User Interface help us to achieve this.

Private office	15-50%
Classroom	40-50%
Conference room	25-70%
Restroom	32-72%
Corridors	32-84%
Storage areas	50-80%

PRODUCTS



Our product range comes from indoor to media Façade



 **LEDVANCE**



OSRAM



ADLED 
PASSIONATE ABOUT LIGHT



 **TRAXON**



SIMES

 **DELTA LIGHT**

DEOS.AG

OUR PARTNERS


Adex
LIGHTING

Remarkable FINISHED PROJECTS

Bangladesh Parliament | Bangladesh Bank | World Bank Bangladesh |
Dhaka Metro Rail CP-6 | Radisson Blu (Ctg.) | Grameenphone HQ |
Honda | Shanta Forum | Shanta Sky Mark | Elevated Expressway |
Police Head Quarter Helipad | Justice Shahabuddin Park |
SDS International (GILDAN) | British American Tobacco (BAT) |
Rangpur City Corporation | Khulna City Corporation | Sheikh Russel Eco-Park |
Standard Chartered Sunflower | Banani Graveyard | Coats Bangladesh |
National Academy for Development Administration (NADA) |
Shadhinata Tower | IFIC Bank Head Office | Aarong Retail Stores |
Cox's Bazar Railway | Bangladesh Betar | Padma Bridge Mural |
International Mother Language Institute | Laila Style | Glory Textile |
Saiham Denim | DPDC | PGCB | And many more





Radisson Blu Ctg.



IFIC Bank Head Office



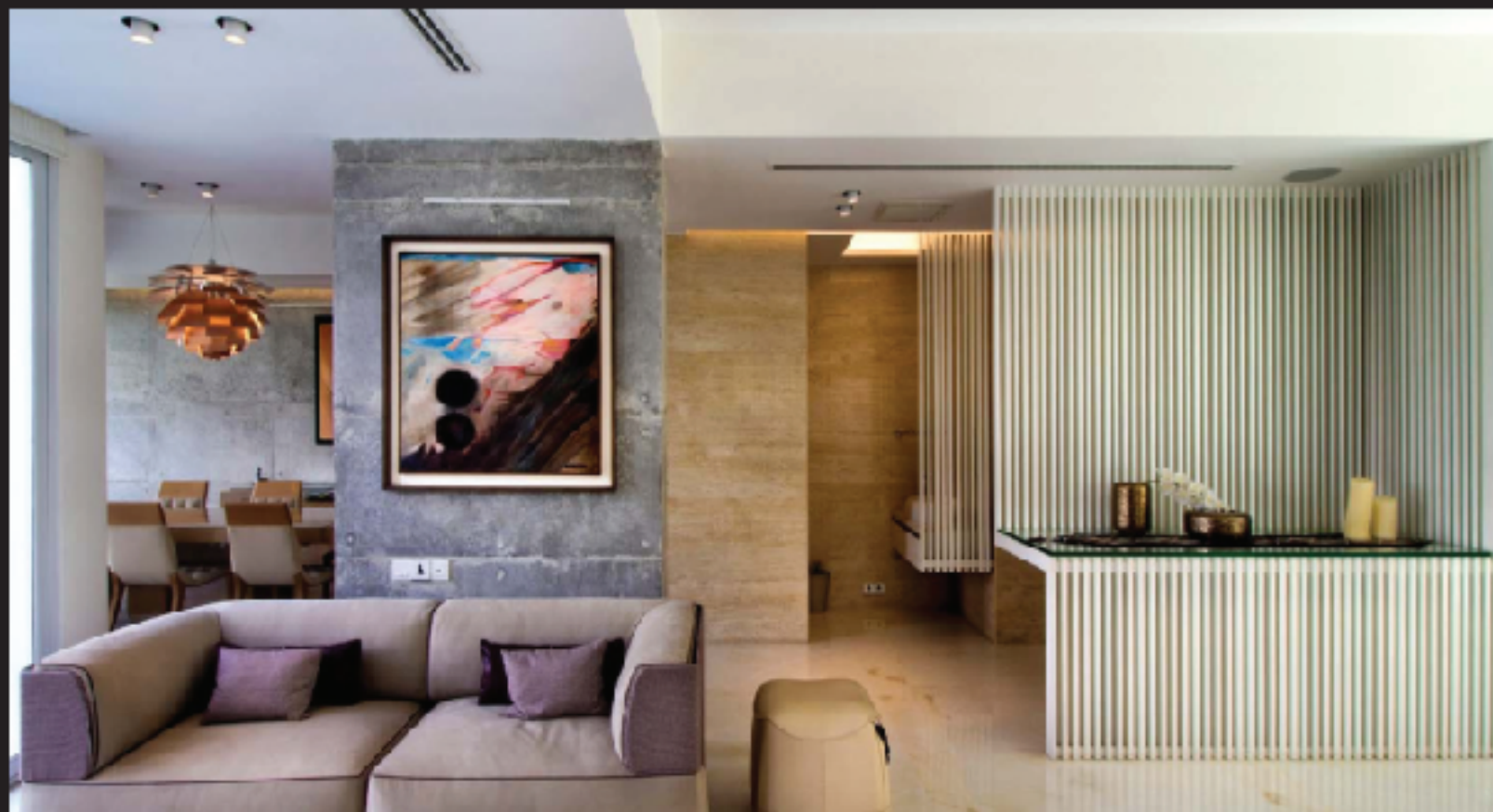
Grameenphone HQ



Honda Bangladesh



Grameenphone HQ



Abiana Residence



Radisson Blu Ctg.



Evercare Hospital Ctg.



Radisson Blu Ctg.



Dhaka Metro Rail Station



Rupayan Trade Centre



International Mother Language Institute



Radisson Blu (Ctg.)



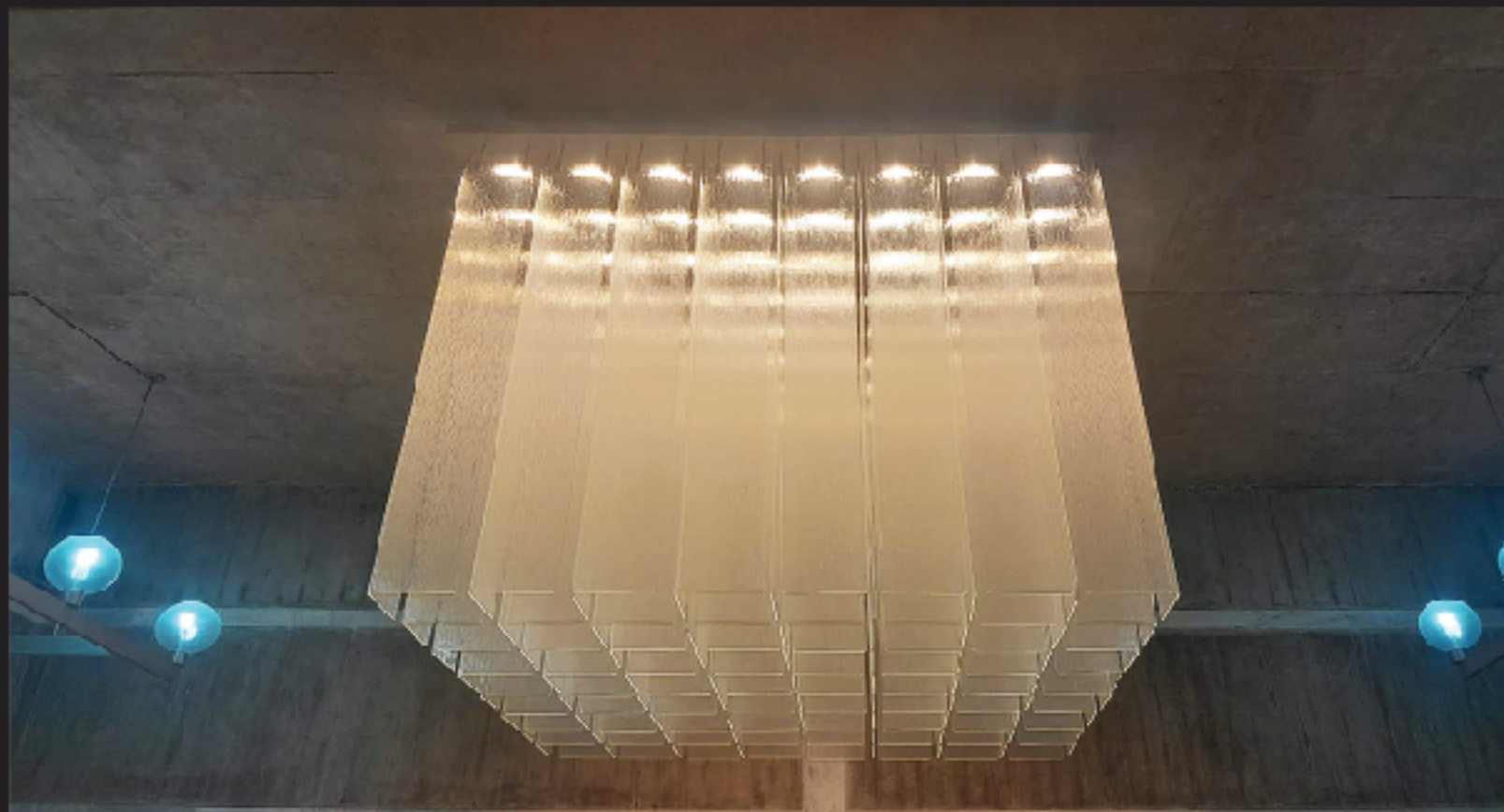
Justice Shahabuddin Park



Army Central Mosque



Bangabandhu Sheikh Mujib Hi-Tech Park, Sylhet



Bangladesh National Parliament



BSMMU Medical Convention Center

I wish I could show you when you are lonely or in darkness the astonishing light of your own being.

-Rabindranath Tagore

ADEX LIGHTING SYSTEM LIMITED

374 Tejgaon Industrial Area (4th & 5th Floor), Dhaka-1208, Bangladesh
Phones: +88-02-41010439, 41010440, 41010463, 41010464
E-mail: info@adexlighting.com, Web : www.adexlighting.com

